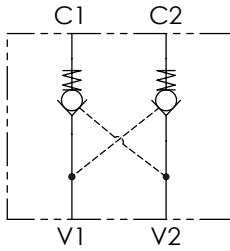


Schema idraulico - Hydraulic circuit



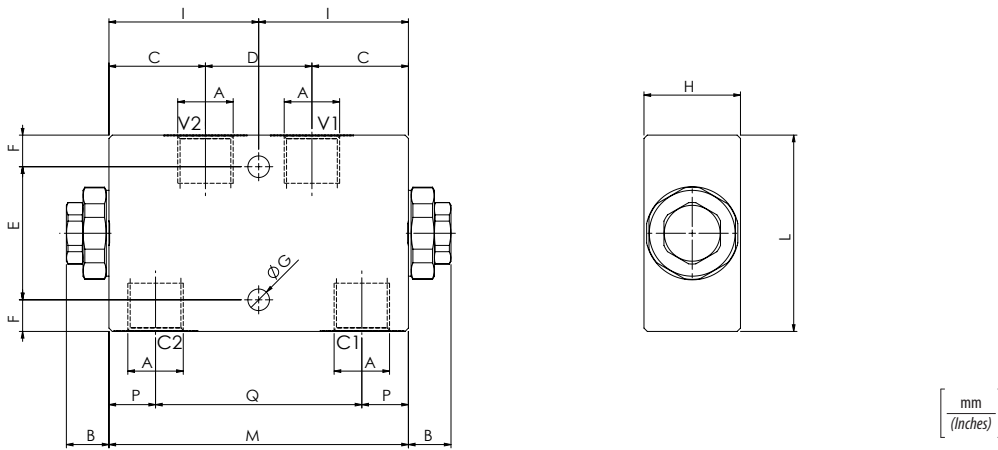
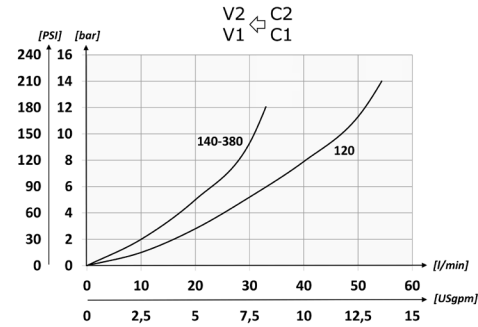
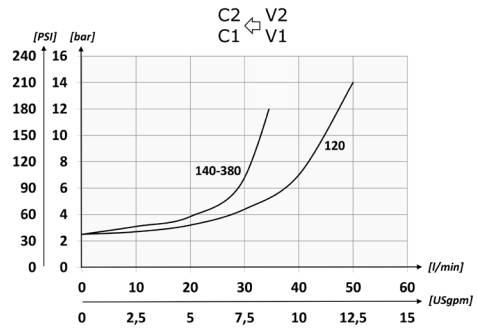
Dati tecnici - Technical data

Olio idraulico/Mineral oil	ISO 6743/4 (DIN 51524)
Viscosità olio/Oil viscosity	15-250 mm ² /s (15 to 250 cSt)
Classe di contaminazione max con filtro Max contamination index with filter	ISO 4406:1999 Classe 19/17/14
Temperatura dell'olio/Oil temperature	-20°C +80°C -4°F + 176°F
Temperatura ambiente/Ambient temperature	-20°C +50°C -4°F + 122°F
È indispensabile l'utilizzo di un filtro per proteggere la valvola (filtrazione consigliata 15 µm) It is necessary a filter use to protect the valve (advised filtration 15 µm)	
Trafilamento massimo Max leakage	0,25 cm ³ /min - 5 gocce/min 0,015 in ³ /min - 5 drops/min

Codice ordinazione Ordering code	01	02
	VRDL	

01	Valvole di blocco pilotate a doppio effetto (Double acting pilot check valves)	VRDL
02	Dimensione (Size)	BSPP 1/4 140N
		BSPP 3/8 380N
		BSPP 1/2 120N

Performances



Caratteristiche tecniche - Technical characteristics

Tipo Type	A	Portata max Max flow l/min-USgpm	Pressione max Max pressure bar/PSI	B	C	D	E	F	G	H	I	L	M	P	Q	Peso approssimativo Approx weight kg/lb	Rapporto di pilotaggio Pilot ratio
VRDL140N	BSPP 1/4	35 (9.2)	350 (5075)	13	29	32	40	9,5	6,5	29	45	59	90	14	62	1,18 (2.60)	1:7
VRDL380N	BSPP 3/8			(0.51)	(1.14)	(1.26)		(0.37)	(0.26)	(1.14)	(1.77)	(2.32)	(3.54)	(0.55)	(2.44)		
VRDL120N	BSPP 1/2	50 (13.2)		14,8	38	34	(1.57)	14,5	8,5	34	55	69	110	20,5	69	1,77 (3.90)	
				(0.58)	(1.50)	(1.34)		(0.57)	(0.33)	(1.34)	(2.17)	(2.72)	(4.33)	(0.81)	(2.72)		