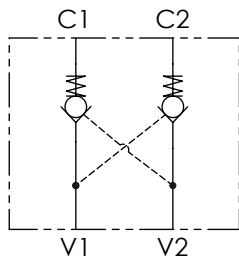


Schema idraulico - Hydraulic circuit



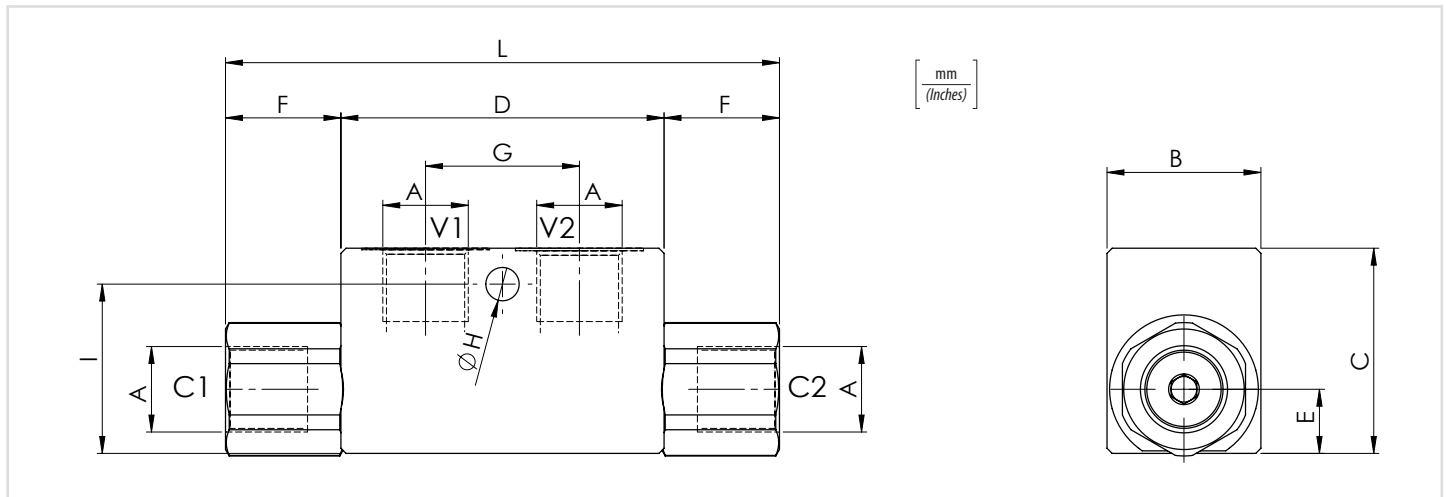
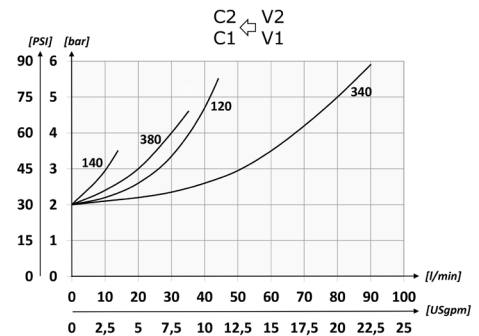
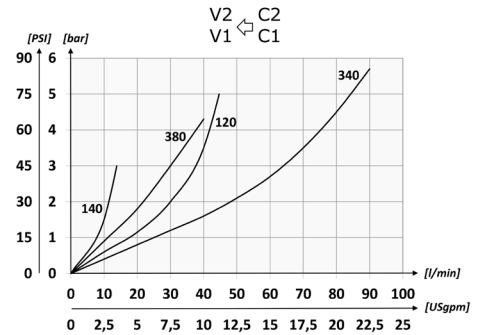
Dati tecnici - Technical data

Olío idraulico/Mineral oil	ISO 6743/4 (DIN 51524)	
Viscosità olio/Oil viscosity	15-250 mm ² /s (15 to 250 cSt)	
Classe di contaminazione max con filtro Max contamination index with filter	ISO 4406:1999 Classe 19/17/14	
Temperatura dell'olio/Oil temperature	-20°C +80°C	-4°F + 176°F
Temperatura ambiente/Ambient temperature	-20°C +50°C	-4°F + 122°F
È indispensabile l'utilizzo di un filtro per proteggere la valvola (filtrazione consigliata 15 µm) It is necessary a filter use to protect the valve (advised filtration 15 µm)		
Trafilamento massimo Max leakage	0,25 cm ³ /min - 5 gocce/min	0,015 in ³ /min - 5 drops/min

Codice ordinazione Ordering code	01	02
	VRDE	

01	Valvole di blocco a doppio effetto (Double acting pilot check valves)	VRDE	
02	Dimensione (Size)	BSPP 1/4	140
		BSPP 3/8	380
		BSPP 1/2	120
		BSPP 3/4	340

Performances



Caratteristiche tecniche - Technical characteristics

Tipo Type	A	Portata max (l/min) Max flow (USgpm)	Pressione max (bar) Max pressure (PSI)	B	C	D	E	F	G	H	I	L	Peso approssimativo (kg) Approx weight (lb)	Rapporto di pilotaggio Pilot ratio
VRDE140	BSPP 1/4	15 (4)	320 (4640)	30 (1.18)	40 (1.57)	63 (2.48)	12,5 (0.49)	22,5 (0.89)	30 (1.18)	6,5 (0.26)	33 (1.30)	108 (4.25)	0,64 (1.41) 0,60 (1.32)	1:4
VRDE380	BSPP 3/8	35 (9.2)		35 (1.38)	50 (1.97)	82 (3.23)	16,5 (0.65)	31,5 (1.24)	36 (1.42)		35 (1.38)	145 (5.71)		
VRDE120	BSPP 1/2	45 (11.9)	300 (4350)	40 (1.57)	60 (2.36)	100 (3.94)	22,5 (0.89)	46 (1.81)	50 (1.97)	8,5 (0.33)	50 (1.97)	192 (7.56)	1,10 (2.42) 2 (4.40)	1:2.9
VRDE340	BSPP 3/4	70 (18.5)		35 (1.38)	50 (1.97)	82 (3.23)	16,5 (0.65)	31,5 (1.24)	36 (1.42)		50 (1.97)	192 (7.56)		