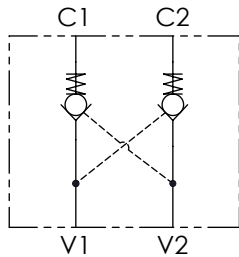


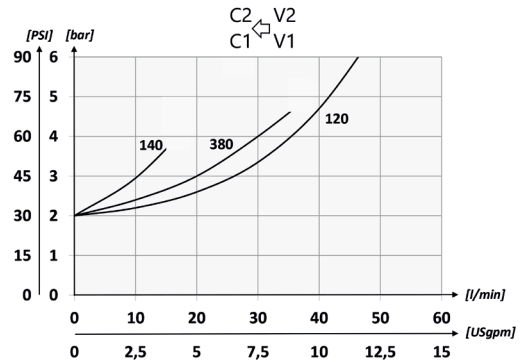
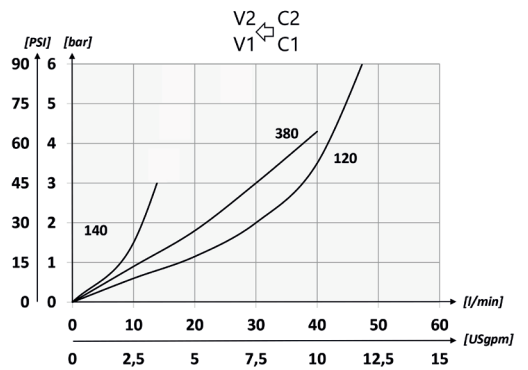
Codice ordinazione Ordering code	01	02	03
	<b>VRDD</b>		

<b>01</b>	Valvole di blocco a doppio effetto DIN2353 (DIN2353 double acting pilot check valves)	<b>VRDD</b>
<b>02</b>	Dimensione (Size)	BSPP 1/4
		BSPP 3/8
		BSPP 1/2
<b>03</b>	Dimensione tubo (Size pipe)	Per tubo Ø 8 - For Ø 8 pipe
		Per tubo Ø 12 - For Ø 12 pipe standard only for BSPP 1/4 and 3/8
		Per tubo Ø 15 - For Ø 15 pipe standard only for BSPP 1/2

### Schema idraulico - Hydraulic circuit

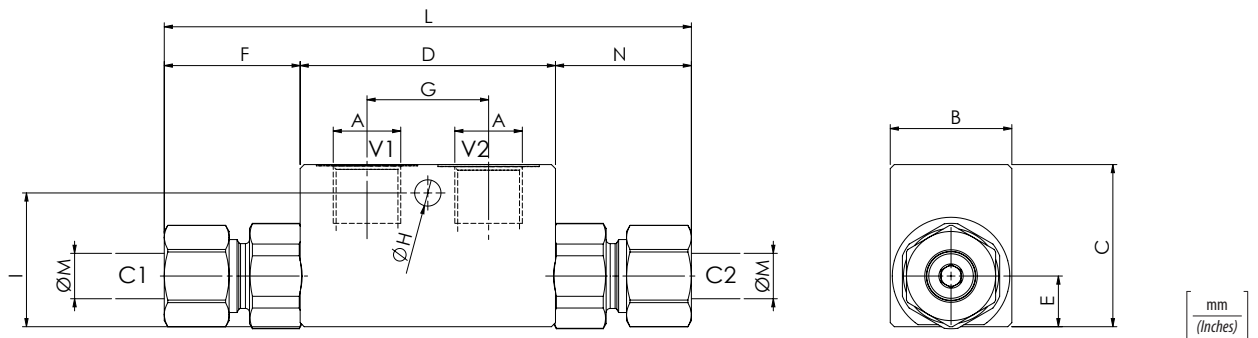


### Performances



### Dati tecnici - Technical data

olio idraulico/Mineral oil	ISO 6743/4 (DIN 51524)
Viscosità olio/Oil viscosity	15-250 mm <sup>2</sup> /s (15 to 250 cSt)
Classe di contaminazione max con filtro Max contamination index with filter	ISO 4406:1999 Classe 19/17/14
Temperatura dell'olio/Oil temperature	-20°C +80°C      -4°F + 176°F
Temperatura ambiente/Ambient temperature	-20°C +50°C      -4°F + 122°F
È indispensabile l'utilizzo di un filtro per proteggere la valvola (filtrazione consigliata 15 µm) It is necessary a filter use to protect the valve (advised filtration 15 µm)	
Trafilamento massimo Max leakage	0,25 cm <sup>3</sup> /min - 5 gocce/min 0,015 in <sup>3</sup> /min - 5 drops/min



### Caratteristiche tecniche - Technical characteristics

Tipo Type	A	Portata max Max flow l/min-USgpm	Pressione max Max pressure bar/PSI	B	C	D	E	F	G	H	I	L	M	Peso approssimativo Approx weight kg/lb	Rapporto di pilotaggio Pilot ratio
<b>VRDD140T8</b>	BSPP 1/4	10 (2.6)	320 (4640)	30 (1.18)	40 (1.57)	63 (2.48)	12,5 (0.49)	28 (1.10)	30 (1.18)	6,5 (0.26)	35 (1.38)	113 (4.45)	8 (0.31)	0,60 (1.32)	1:9
<b>VRDD140</b>		15 (4)												0,64 (1.40)	
<b>VRDD380</b>	BSPP 3/8	35 (9.2)						127 (5)	12 (0.47)			0,63 (1.38)	1:4		
<b>VRDD120</b>		45 (11.9)												15 (0.59)	1,17 (2.57)