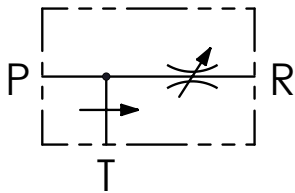




**SCHEMA IDRAULICO / HYDRAULIC CIRCUIT**



**DATI TECNICI / TECHNICAL DATA**

Olío idraulico - Mineral oil	ISO 6743/4 (DIN 51524)
Viscosità olio - Oil viscosity	15-250 mm <sup>2</sup> /s (15 to 250 cSt)
Classe di contaminazione max con filtro Max contamination index with filter	ISO 4406:1999 Classe 19/17/14
Temperatura dell'olio - Oil temperature	-20°C +80°C    -4°F + 176°F
Temperatura ambiente - Environment temperature	-20°C +50°C    -4°F + 122°F
È indispensabile l'utilizzo di un filtro per proteggere la valvola (filtrazione consigliata 15 µm) It is necessary a filter use to protect the valve (advised filtration 15 µm)	

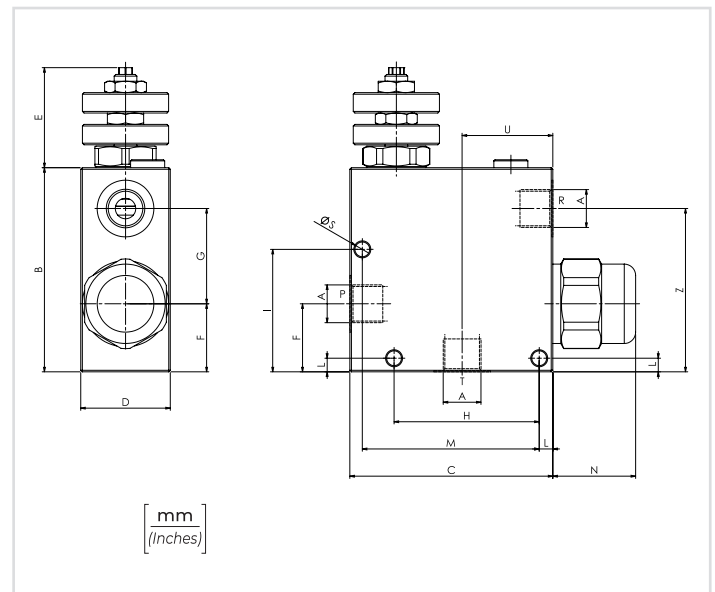
**CODICE ORDINAZIONE  
ORDERING CODE**

01	02	03
<b>VPT</b>		<b>V</b>

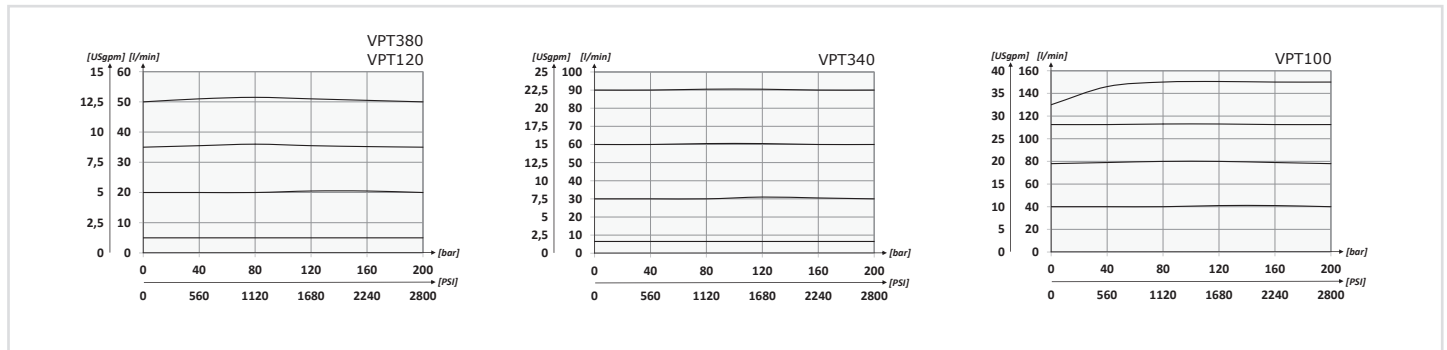
<b>01</b>	REGOLATORI DI FLUSSO 3 VIE - COMPENSATI, CON ECCEDEZZA IN SCARICO (3 WAYS FLOW CONTROL VALVES - PRESSURE COMPENSATED, EXCEEDING FLOW TO TANK)	<b>VPT</b>
<b>02</b>	DIMENSIONE (SIZE)	BSPP 3/8 <b>380</b>
		BSPP 1/2 <b>120</b>
		BSPP 3/4 <b>340</b>
		BSPP 1 <b>100</b>
<b>03</b>	REGOLAZIONE (SETTING)	Volantino (Hand wheel) <b>V</b>

**PORTATA MASSIMA L/MIN - MAX FLOW USGPM**

50 L/MIN CON 30 L/MIN IN R (13,3 USGPM WITH 8 USGPM IN R)	<b>380</b>
80 L/MIN CON 50 L/MIN IN R (21,3 USGPM WITH 13,3 USGPM IN R)	<b>120</b>
150 L/MIN CON 80 L/MIN IN R (40 USGPM WITH 21,3 USGPM IN R)	<b>340</b>
240 L/MIN CON 150 L/MIN IN R (64 USGPM WITH 40 USGPM IN R)	<b>100</b>



**PERFORMANCES**



**CARATTERISTICHE TECNICHE / TECHNICAL CHARACTERISTICS**

TIPO TYPE	A	PORTATA MAX MAX FLOW l/min-USgpm	PRESSIONE MAX MAX PRESSURE bar-PSI	B	C	D	E	F	G	H	I	L	M	N	S	U	Z	PESO APPROX (kg) APPROX WEIGHT (lb)	
VPT380	BSPP 3/8	50 (13.2)	250 (3625)	90 (3.54)	89,5 (35.24)	39,5 (15.55)	47,5 (1.87)	30 (1.18)	42 (1.65)	64 (2.52)	54 (2.13)	6 (0.24)	78 (3.07)	36,5 (1.44)	6,5 (0.26)	40 (1.57)	/	1,39 (3.06)	
VPT120	BSPP 1/2	90 (23.8)		110 (4.33)	110 (4.33)	50 (1.97)	49,5 (1.95)	35 (1.38)	50 (1.97)	88 (3.46)	63,5 (2.50)	8,5 (0.33)	100 (3.70)	34,7 (1.37)	8,5 (0.33)	44 (1.73)	/	1,94 (4.28)	
VPT340	BSPP 3/4	150 (39.6)		10 (0.39)	10 (0.39)	/	52,5 (2.07)	47 (1.85)	/	/	/	/	/	10 (0.39)	36,5 (1.44)	8,5 (0.33)	44 (1.73)	87 (3.45)	2,05 (4.52)
VPT100	BSPP 1	240 (63.4)		10 (0.39)	10 (0.39)	/	52,5 (2.07)	47 (1.85)	/	/	/	/	/	10 (0.39)	36,5 (1.44)	8,5 (0.33)	44 (1.73)	87 (3.45)	2,05 (4.52)