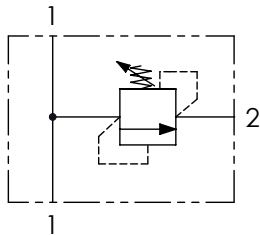
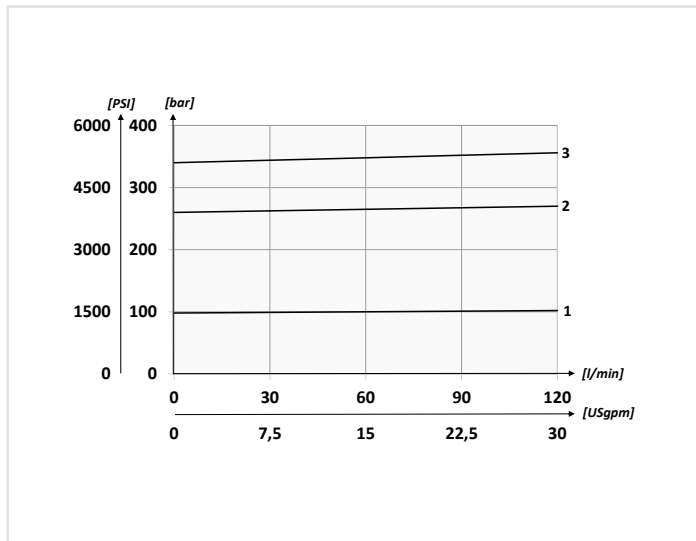


Schema idraulico - Hydraulic circuit



**Performances**



**Dati tecnici - Technical data**

<b>Olio idraulico/Mineral oil</b>	<b>ISO 6743/4 (DIN 51524)</b>
<b>Viscosità olio/Oil viscosity</b>	<b>15-250 mm<sup>2</sup>/s (15 to 250 cSt)</b>
<b>Classe di contaminazione max con filtro</b> Max contamination index with filter	<b>ISO 4406:1999 Classe 19/17/14</b>
<b>Temperatura dell'olio/Oil temperature</b>	<b>-20°C +80°C      -4°F + 176°F</b>
<b>Temperatura ambiente/Ambient temperature</b>	<b>-20°C +50°C      -4°F + 122°F</b>
<b>È indispensabile l'utilizzo di un filtro per proteggere la valvola (filtrazione consigliata 15 µm)</b> It is necessary a filter use to protect the valve (advised filtration 15 µm)	

**Caratteristiche tecniche - Technical characteristics**

Tipo Type	Portata max (l/min) Max flow (USgpm)	Pressione max (bar) Max pressure (PSI)	Peso approssimativo (kg) Approx weight (lb)
<b>VMDR120340</b>	<b>120 (31.7)</b>	<b>350 (5075)</b>	<b>1,1 (2.42)</b>
<b>VMDR120100</b>			<b>1,7 (3.74)</b>

<b>Codice ordinazione</b> <b>Ordering code</b>	01	02	03	04
<b>VMDR120</b>				

<b>01</b>	Valvole di massima in linea (Direct acting relief valves)	<b>VMDR120</b>
<b>02</b>	Dimensione (Size)	BSPP 3/4 <b>340</b>
		BSPP 1 <b>100</b>
<b>03</b>	Regolazione (Setting)	Chiave (Screw) <b>C</b>
		Volantino (Handknob) Tipo (Type) <b>81300023</b> <b>V</b>
<b>04</b>	Molla (Spring) <b>10/100 bar (145/1450 PSI) max</b>	Incremento pressione al giro (Press. increase) <b>21 bar/al giro (305 PSI/turn)</b> <b>1</b>
	Molla (Spring) <b>20/250 bar (290/3625 PSI) max</b>	Incremento pressione al giro (Press. increase) <b>48 bar/al giro (696 PSI/turn)</b> <b>2</b>
	Molla (Spring) <b>40/350 bar (580/5075 PSI) max</b>	Incremento pressione al giro (Press. increase) <b>55 bar/al giro (798 PSI/turn)</b> <b>3</b>

