

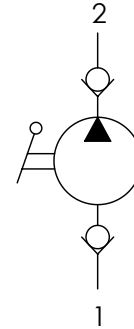


La pompa viene fornita con leva di azionamento L=270 mm
The pump is supplied with acting lever 10,5 in log

	01	02	03
Codice ordinazione Ordering code	PME		L

01	Pompe a mano (Cartridge hand pumps)	PME
02	Cilindrata (cm ³) Displacement (in ³)	05 06 07
03	Leva (Hand lever)	L

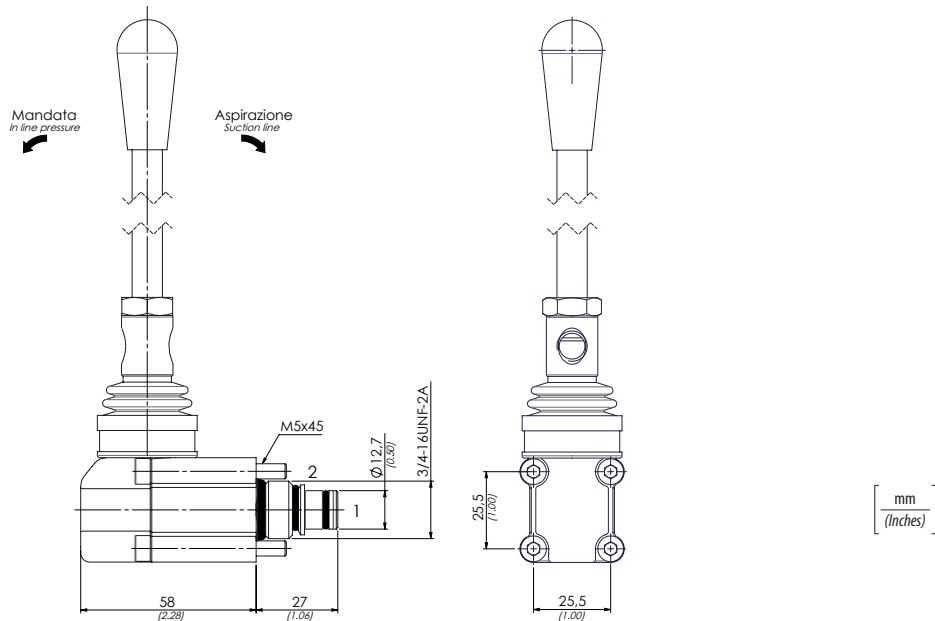
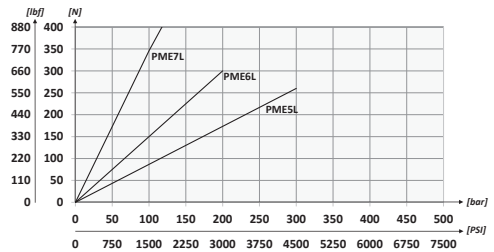
Schema idraulico - Hydraulic circuit



Dati tecnici - Technical data

Olio idraulico/Mineral oil	ISO 6743/4 (DIN 51524)	
Viscosità olio/Oil viscosity	15-250 mm ² /s (15 to 250 cSt)	
Classe di contaminazione max con filtro Max contamination index with filter	ISO 4406:1999 Classe 19/17/14	
Temperatura dell'olio/Oil temperature	-20°C +80°C	-4°F + 176°F
Temperatura ambiente/Ambient temperature	-20°C +50°C	-4°F + 122°F
È indispensabile l'utilizzo di un filtro per proteggere la valvola (filtrazione consigliata 15 µm) It is necessary a filter use to protect the valve (advised filtration 15 µm)		
Trafilamento massimo Max leakage	0,25 cm ³ /min - 5 gocce/min	0,015 in ³ /min - 5 drops/min

Performances



Caratteristiche tecniche - Technical characteristics

Tipo (Type)	Cilindrata (cm ³) Displacement (in ³)	Pressione max (bar) Max pressure (PSI)	Peso approssimativo (kg) Approx weight (lb)	Coppia di serraggio (Nm) Tightening torque (lbf ft)	Cavità (Cavity)
PME5L	1 (0.06)	300 (4350)	0,46 (1.01)	25-30 (19-22)	SAE8/2
PME6L	2 (0.12)	200 (2900)			
PME7L	3 (0.18)	120 (1740)			