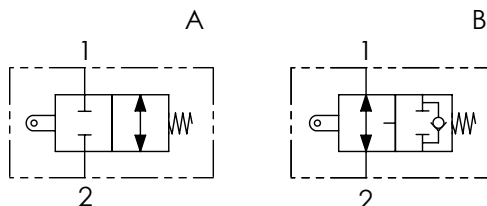




| | | | |
|-------------------------------------|------------|----|----|
| Codice ordinazione Ordering code | 01 | 02 | 03 |
| | FCT | | |

| | | | |
|-----------|---|--|------------|
| 01 | Valvole di fine corsa a trazione (<i>Tug end - stroke valves</i>) | FCT | |
| 02 | Dimensione (<i>Size</i>) | BSPP 3/8 | 380 |
| | | BSPP 1/2 | 120 |
| | | BSPP 3/4 | 340 |
| | | BSPP 1 | 100 |
| 03 | Schema (<i>Circuit</i>) | Centro chiuso (<i>Closed centre</i>) | A |
| | | Centro aperto (<i>Open centre</i>) | B |

Schema idraulico - Hydraulic circuit

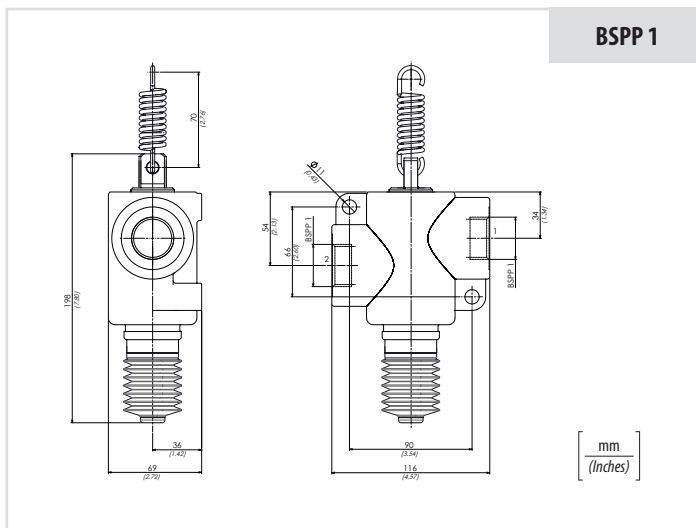
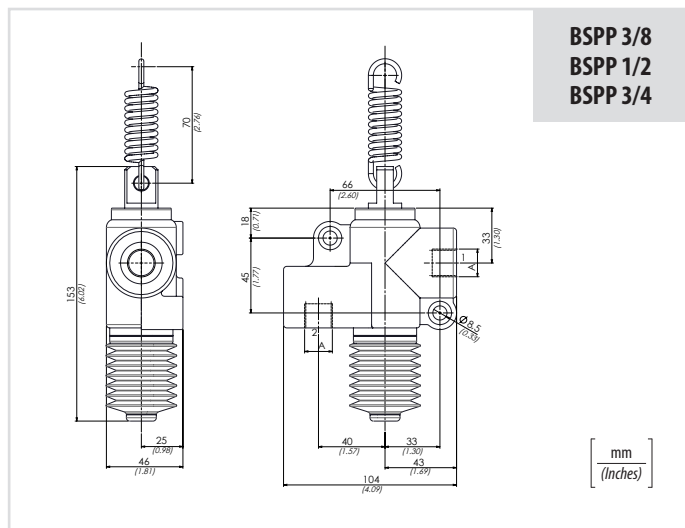


Caratteristiche tecniche - Technical characteristics

| Tipo Type | A | Portata max (l/min) Max flow (USgpm) | Pressione max (bar) Max pressure (PSI) | Peso approssimativo (kg) Approx weight (lb) |
|---------------|-----------------|---|---|--|
| FCT380 | BSPP 3/8 | 60 (15.8) | 250 (3625) | 1,7 (3.7) |
| FCT120 | BSPP 1/2 | 80 (21.1) | | 1,8 (4) |
| FCT340 | BSPP 3/4 | 100 (26.4) | 200 (2900) | 1,9 (4.1) |
| FCT100 | BSPP 1 | 140 (37) | | 2,5 (5.5) |

Dati tecnici - Technical data

| | | |
|---|--|--------------------|
| Olio idraulico/Mineral oil | ISO 6743/4 (DIN 51524) | |
| Viscosità olio/Oil viscosity | 15-250 mm²/s (15 to 250 cSt) | |
| Classe di contaminazione max con filtro | ISO 4406:1999 Classe 19/17/14 | |
| <i>Max contamination index with filter</i> | | |
| Temperatura dell'olio/Oil temperature | -20°C +80°C | -4°F +176°F |
| Temperatura ambiente/Ambient temperature | -20°C +50°C | -4°F +122°F |
| È indispensabile l'utilizzo di un filtro per proteggere la valvola (filtrazione consigliata 15 µm) | | |
| <i>It is necessary a filter use to protect the valve (advised filtration 15 µm)</i> | | |



Performances

