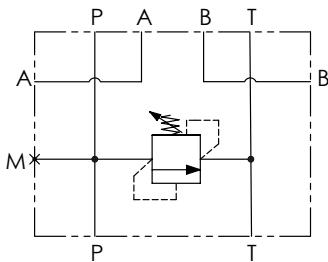


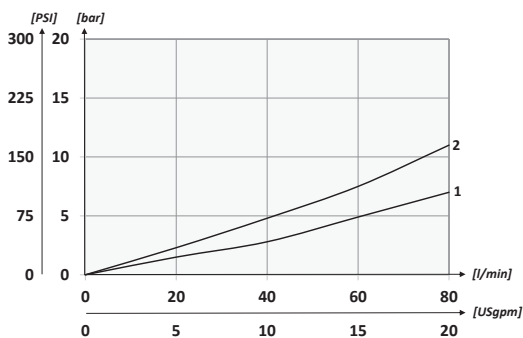
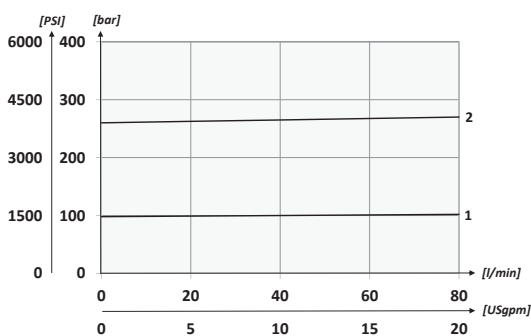
Schema idraulico - Hydraulic circuit



Dati tecnici - Technical data

Olio idraulico/Mineral oil	ISO 6743/4 (DIN 51524)	
Viscosità olio/Oil viscosity	15-250 mm ² /s (15 to 250 cSt)	
Classe di contaminazione max con filtro Max contamination index with filter	ISO 4406:1999 Classe 19/17/14	
Temperatura dell'olio/Oil temperature	-20°C +80°C	-4°F + 176°F
Temperatura ambiente/Ambient temperature	-20°C +50°C	-4°F + 122°F
È indispensabile l'utilizzo di un filtro per proteggere la valvola (filtrazione consigliata 15 µm) It is necessary a filter use to protect the valve (advised filtration 15 µm)		

Performances



01	02	03
BS5		

Codice ordinazione
Ordering code

01	Basi singole cetop5 in alluminio (Aluminium cetop5 single manifolds)	BS5
02	Regolazione (Setting)	Chiave (Screw) C
		Volantino (Handknob) Tipo (Type) 81300023 V
03	Molla (Spring) 10/100 bar (145/1450 PSI) max	Incremento pressione al giro (Press. increase) 23 bar/al giro (334 PSI/turn) 1
	Molla (Spring) 20/210 bar (290/3045 PSI) max	Incremento pressione al giro (Press. increase) 40 bar/al giro (580 PSI/turn) 2

Technical drawing showing front and top views of the manifold with dimensions in mm (inches). Key dimensions include: 5.5 (0.22), 90 (3.54), 24.5 (0.96), 31.5 (1.24), 49 (1.93), 1.5 (0.06), 48.5 (1.91), 15 (0.59), 21 (0.83), 18 (0.71), 3.75 (0.15), 20.5 (0.81), 54 (2.13), 13.75 (0.54), 18 (0.71), 79 (3.11), 5.5 (0.22), 5.5 (0.22), 15.5 (0.61), 52 (2.05), 90 (3.54), 5.5 (0.22), 5.5 (0.22), 79 (3.11), 44 (1.73), 35 (1.38), 90 (3.54), 57 max (2.24 max).

Attacchi - Pressure drops

P-T-A-B	BSPP 1/2
M	BSPP 1/4

Il blocco in alluminio può essere utilizzato per pressioni fino a 210 bar (3045 PSI)
Aluminium manifold can be used for pressures up to 210 bar (3045 PSI)

Caratteristiche tecniche - Technical characteristics

Tipo Type	Portata max Max flow l/min-USgpm	Pressione max Max pressure bar/PSI	Peso approssimativo Approx weight kg/lb	Tipo di valvola Type of valve
BS5	80 (21.1)	210 (3045)	1,20 (2.64)	VMD90