

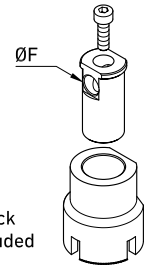


LOCKING DEVICE

Edition. 21.0

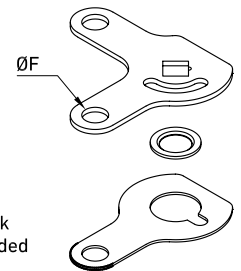
- **LKB** FOR GM - GN
- **LKF** FOR GE - GB - GHP - GPK
- **LKR** FOR GR
- **SECURITY BLOCK** FOR GE - GB
GHP - GPK (except DN6) - G3/4K




 Padlock
not included

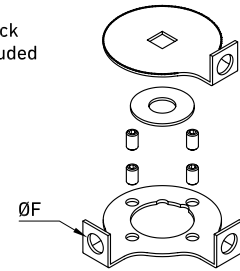
LKB FOR GM - GN

| TYPE | DN | SW | ØF | MATERIAL | TREATMENT | WEIGHT | ITEM CODE |
|--------|----------|-----------|------|-----------------|------------|----------|--------------|
| LK6-B | 6-10-13 | mm 9 | 9,5 | CARBON STEEL | GALVANIZED | kg 0,178 | KMK00LK6B2Z |
| | | inch 0,35 | 0,37 | | | lb 0,39 | |
| LK6-B | 6-10-13 | mm 9 | 9,5 | STAINLESS STEEL | - | kg 0,178 | KMK00LK6B6H |
| | | inch 0,35 | 0,37 | | | lb 0,39 | |
| LK20-B | 20-25 | mm 14 | 10,5 | CARBON STEEL | GALVANIZED | kg 0,413 | KMK00LK20B2Z |
| | | inch 0,55 | 0,41 | | | lb 0,91 | |
| LK20-B | 20-25 | mm 14 | 10,5 | STAINLESS STEEL | - | kg 0,413 | KMK00LK20B6H |
| | | inch 0,55 | 0,41 | | | lb 0,91 | |
| LK32-B | 32-40-50 | mm 17 | 10,5 | CARBON STEEL | GALVANIZED | kg 0,53 | KMK00LK32B2Z |
| | | inch 0,67 | 0,41 | | | lb 1,17 | |
| LK32-B | 32-40-50 | mm 17 | 10,5 | STAINLESS STEEL | - | kg 0,53 | KMK00LK32B6H |
| | | inch 0,67 | 0,41 | | | lb 1,17 | |

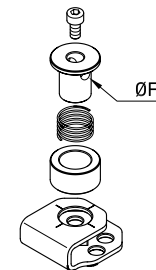

 Padlock
not included

LKF FOR GE - GB - GHP - GPK

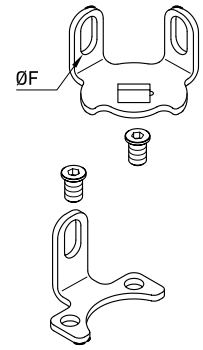
| TYPE | DN | SW | ØF | MATERIAL | TREATMENT | WEIGHT | ITEM CODE |
|--------|----------------|-----------|------|-----------------|------------|----------|--------------|
| LK6-MF | 6 only for GPK | mm 6 | 6,8 | CARBON STEEL | GALVANIZED | kg 0,043 | K0K00LK6MF2Z |
| | | inch 0,24 | 0,27 | | | lb 0,09 | |
| LK6-F | 6-10-13 | mm 9 | 9,5 | CARBON STEEL | GALVANIZED | kg 0,043 | K0K00LK6F2Z |
| | | inch 0,35 | 0,37 | | | lb 0,09 | |
| LK6-F | 6-10-13 | mm 9 | 9,5 | STAINLESS STEEL | - | kg 0,043 | K0K00LK6F6H |
| | | inch 0,35 | 0,37 | | | lb 0,09 | |
| LK20-F | 20-25 | mm 14 | 9,5 | CARBON STEEL | GALVANIZED | kg 0,121 | K0K00LK20F2Z |
| | | inch 0,55 | 0,37 | | | lb 0,27 | |
| LK20-F | 20-25 | mm 14 | 9,5 | STAINLESS STEEL | - | kg 0,121 | K0K00LK20F6H |
| | | inch 0,55 | 0,37 | | | lb 0,27 | |
| LK32-F | 32-40-50 | mm 17 | 9,5 | CARBON STEEL | GALVANIZED | kg 0,187 | K0K00LK32F2Z |
| | | inch 0,67 | 0,37 | | | lb 0,41 | |
| LK32-F | 32-40-50 | mm 17 | 9,5 | STAINLESS STEEL | - | kg 0,187 | K0K00LK32F6H |
| | | inch 0,67 | 0,37 | | | lb 0,41 | |


 Padlock
not included

LKR FOR GR

| TYPE | DN | SW | ØF | MATERIAL | TREATMENT | WEIGHT | ITEM CODE |
|--------|----------|-----------|------|-----------------|------------|---------|---------------|
| LKR13 | 13 | mm 9 | 9,5 | CARBON STEEL | GALVANIZED | kg 0,1 | KOK00LKR132Z |
| | | inch 0,35 | 0,37 | | | lb 0,22 | |
| LKR13 | 13 | mm 9 | 9,5 | STAINLESS STEEL | - | kg 0,1 | KOK00LKR136H |
| | | inch 0,35 | 0,37 | | | lb 0,22 | |
| LKR20 | 20-25 | mm 14 | 9,5 | CARBON STEEL | GALVANIZED | kg 0,18 | KOK00LKR202Z |
| | | inch 0,55 | 0,37 | | | lb 0,40 | |
| LKR20 | 20-25 | mm 14 | 9,5 | STAINLESS STEEL | - | kg 0,18 | KOK00LKR206H |
| | | inch 0,55 | 0,37 | | | lb 0,40 | |
| LKR32 | 32-40-50 | mm 17 | 9,5 | CARBON STEEL | GALVANIZED | kg 0,34 | KOK00LKR322Z |
| | | inch 0,67 | 0,37 | | | lb 0,75 | |
| LKR32 | 32-40-50 | mm 17 | 9,5 | STAINLESS STEEL | - | kg 0,34 | KOK00LKR326H |
| | | inch 0,67 | 0,37 | | | lb 0,75 | |
| LKR65 | 65-80 | mm 19 | 9,5 | CARBON STEEL | GALVANIZED | kg 0,55 | KOK00LKR652Z |
| | | inch 0,75 | 0,37 | | | lb 1,21 | |
| LKR65 | 65-80 | mm 19 | 9,5 | STAINLESS STEEL | - | kg 0,55 | KOK00LKR656H |
| | | inch 0,75 | 0,37 | | | lb 1,21 | |
| LKR100 | 100 | mm 24 | 9,5 | CARBON STEEL | GALVANIZED | kg 1,08 | KOK00LKR1002Z |
| | | inch 0,94 | 0,37 | | | lb 2,38 | |
| LKR100 | 100 | mm 24 | 9,5 | STAINLESS STEEL | - | kg 1,08 | KOK00LKR1006H |
| | | inch 0,94 | 0,37 | | | lb 2,38 | |


SECURITY BLOCK FOR GE - GB - GHP - GPK (EXCEPT DN6) - G3/4K

| TYPE | DN | SW | ØF | MATERIAL | TREATMENT | WEIGHT | ITEM CODE |
|------|----------------------------------|-----------|------|--------------|------------|----------|-------------|
| SB6 | 6-10-13 6 only for G3/4K | mm 6 | 6,8 | CARBON STEEL | GALVANIZED | kg 0,066 | K0B00SB61Z |
| | | inch 0,24 | 0,27 | | | lb 0,15 | |
| SB20 | 20-25 10-13-20 only for G3/4K | mm 9 | 9,5 | CARBON STEEL | GALVANIZED | kg 0,221 | K0B00SB201Z |
| | | inch 0,35 | 0,37 | | | lb 0,49 | |
| SB32 | 32-40-50 25 only for G3/4K | mm 17 | 9,5 | CARBON STEEL | GALVANIZED | kg 0,24 | K0B00SB321Z |
| | | inch 0,67 | 0,37 | | | lb 0,53 | |


LKS FOR SBF - SBF-W

| TYPE | DN | ANSI | SW | | ØF | MATERIAL | TREATMENT | WEIGHT | |
|--------------|--------------|-------------|------|------|------|-----------------|------------|--------|------|
| LK13 - S | LK13 - S | 150-300-600 | mm | 9 | 6,5 | CARBON STEEL | GALVANIZED | kg | 0,03 |
| | | | inch | 0,35 | 0,26 | | | lb | 0,07 |
| LK13 - S | LK13 - S | 150-300-600 | mm | 9 | 6,5 | STAINLESS STEEL | - | kg | 0,03 |
| | | | inch | 0,35 | 0,26 | | | lb | 0,07 |
| LK20 - S 150 | LK20 - S 150 | 150 | mm | 14 | 6,5 | CARBON STEEL | GALVANIZED | kg | 0,07 |
| | | | inch | 0,55 | 0,26 | | | lb | 0,15 |
| LK20 - S 150 | LK20 - S 150 | 150 | mm | 14 | 6,5 | STAINLESS STEEL | - | kg | 0,07 |
| | | | inch | 0,55 | 0,26 | | | lb | 0,15 |
| LK20 - S | LK20 - S | 300-600 | mm | 14 | 6,5 | CARBON STEEL | GALVANIZED | kg | 0,07 |
| | | | inch | 0,55 | 0,26 | | | lb | 0,15 |
| LK20 - S | LK20 - S | 300-600 | mm | 14 | 6,5 | STAINLESS STEEL | - | kg | 0,07 |
| | | | inch | 0,55 | 0,26 | | | lb | 0,15 |
| LK32 - S | LK32 - S | 150-300-600 | mm | 17 | 6,5 | CARBON STEEL | GALVANIZED | kg | 0,08 |
| | | | inch | 0,67 | 0,26 | | | lb | 0,18 |
| LK32 - S | LK32 - S | 150-300-600 | mm | 17 | 6,5 | STAINLESS STEEL | - | kg | 0,08 |
| | | | inch | 0,67 | 0,26 | | | lb | 0,18 |
| LK80 - S | LK80 - S | 150-300-600 | mm | 19 | 10 | CARBON STEEL | GALVANIZED | kg | 0,16 |
| | | | inch | 0,75 | 0,39 | | | lb | 0,35 |
| LK80 - S | LK80 - S | 150-300-600 | mm | 19 | 10 | STAINLESS STEEL | - | kg | 0,16 |
| | | | inch | 0,75 | 0,39 | | | lb | 0,35 |
| LK100 - S | LK100 - S | 150-300-600 | mm | 24 | 12 | CARBON STEEL | GALVANIZED | kg | 0,3 |
| | | | inch | 0,94 | 0,47 | | | lb | 0,66 |
| LK100 - S | LK100 - S | 150-300-600 | mm | 24 | 12 | STAINLESS STEEL | - | kg | 0,3 |
| | | | inch | 0,94 | 0,47 | | | lb | 0,66 |

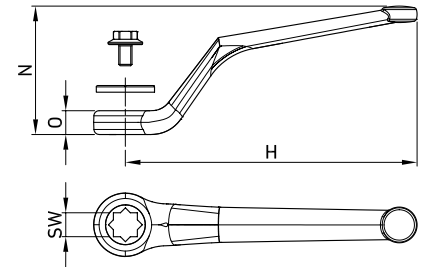


HANDLES

Edition. 21.0

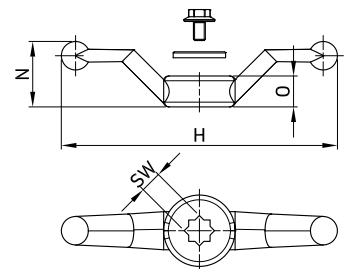
- BENT HANDLES
- BUTTERFLY HANDLES
- CUT BENT HANDLES
- CUT STRAIGHT HANDLES
- PIPE HANDLES
- SHORT HANDLES
- STRAIGHT HANDLES





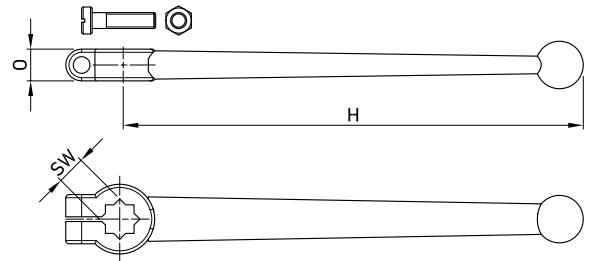
BENT HANDLES

| SW | H | N | O | MATERIAL | TREATMENT | WEIGHT | HANDLE CODE | KIT CODE |
|-----------|-------|------|------|-----------------|------------|----------|-------------|-----------------|
| mm 9 | 110 | 53 | 9 | ZAMAK | CHROMING | kg 0,082 | C001010ZC | K0L0011ZZ |
| inch 0,35 | 4,33 | 2,09 | 0,35 | | | lb 0,18 | | |
| mm 9 | 110 | 53 | 9 | CARBON STEEL | GALVANIZED | kg 0,097 | C001010ZZ | K0L0011ZZ |
| inch 0,35 | 4,33 | 2,09 | 0,35 | | | lb 0,21 | | |
| mm 9 | 110 | 53 | 9 | STAINLESS STEEL | - | kg 0,098 | C0010104H | K0L00116H |
| inch 0,35 | 4,33 | 2,09 | 0,35 | | | lb 0,22 | | |
| mm 14 | 180 | 48 | 13 | ZAMAK | CHROMING | kg 0,18 | C008550ZC | K0L0016ZZ |
| inch 0,55 | 7,09 | 1,89 | 0,51 | | | lb 0,40 | | |
| mm 14 | 180 | 48 | 14 | CARBON STEEL | GALVANIZED | kg 0,248 | C006920ZZ | K0L0015ZZ |
| inch 0,55 | 7,09 | 1,89 | 0,55 | | | lb 0,55 | | |
| mm 14 | 180 | 48 | 14 | STAINLESS STEEL | - | kg 0,257 | C0069204H | K0L00156H |
| inch 0,55 | 7,09 | 1,89 | 0,55 | | | lb 0,57 | | |
| mm 17 | 200 | 60 | 13 | CARBON STEEL | GALVANIZED | kg 0,36 | C050550ZZ | K06A0019902000Z |
| inch 0,67 | 7,87 | 2,36 | 0,51 | | | lb 0,79 | | |
| mm 17 | 300 | 71 | 14 | CARBON STEEL | GALVANIZED | kg 0,662 | C009250ZZ | KBL0013ZZ |
| inch 0,67 | 11,81 | 2,80 | 0,55 | | | lb 1,46 | | |
| mm 17 | 300 | 71 | 14 | STAINLESS STEEL | - | kg 0,675 | C0092506H | KBL00136H |
| inch 0,67 | 11,81 | 2,80 | 0,55 | | | lb 1,49 | | |



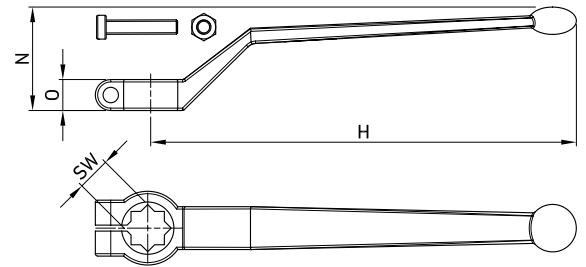
BUTTERFLY HANDLES

| SW | H | N | O | MATERIAL | TREATMENT | WEIGHT | HANDLE CODE | KIT CODE |
|-----------|------|------|------|----------|------------|----------|-------------|-----------|
| mm 9 | 116 | 27,5 | 13 | ZAMAK | GALVANIZED | kg 0,107 | C010740ZZ | K0L0018ZZ |
| inch 0,35 | 4,57 | 1,08 | 0,51 | | | lb 0,24 | | |
| mm 14 | 116 | 27,5 | 13 | ZAMAK | GALVANIZED | kg 0,097 | C010750ZZ | K0L0019ZZ |
| inch 0,55 | 4,57 | 1,08 | 0,51 | | | lb 0,21 | | |



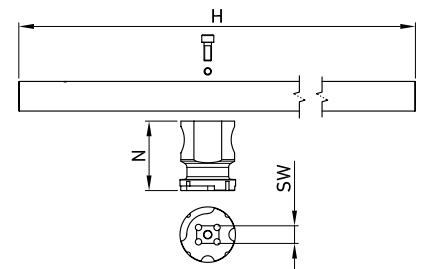
CUT STRAIGHT HANDLES

| | SW | H | N | O | MATERIAL | TREATMENT | WEIGHT | HANDLE CODE | KIT CODE | |
|------|------|-------|---|------|------------|-------------|--------|-------------|-----------|----------|
| mm | 9 | 145 | - | 10 | ZAMAK | CHROMING | kg | 0,042 | C000020ZC | KEL006ZZ |
| inch | 0,35 | 5,71 | - | 0,39 | | | lb | 0,09 | | |
| mm | 14 | 300 | - | 14 | ALLUMINIUM | RED PAINTED | kg | 0,208 | C002890AV | KBL009HV |
| inch | 0,55 | 11,81 | - | 0,55 | | | lb | 0,46 | | |



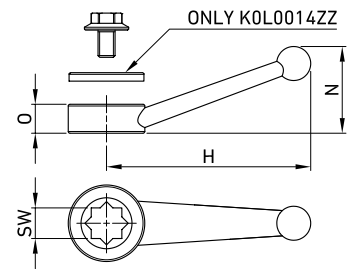
CUT BENT HANDLES

| | SW | H | N | O | MATERIAL | TREATMENT | WEIGHT | HANDLE CODE | KIT CODE | |
|------|------|-------|------|------|------------|-------------|--------|-------------|-----------|-----------|
| mm | 14 | 180 | 43 | 13 | ZAMAK | CHROMING | kg | 0,195 | C001200ZC | KEL007ZZ |
| inch | 0,55 | 7,09 | 1,69 | 0,51 | | | lb | 0,43 | | |
| mm | 14 | 330 | 71 | 14 | ALLUMINIUM | RED PAINTED | kg | 0,222 | C000360AV | KBL0010HV |
| inch | 0,55 | 12,99 | 2,80 | 0,55 | | | lb | 0,49 | | |



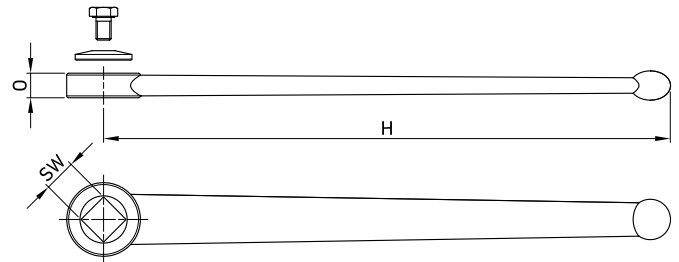
PIPE HANDLES

| | SW | H | N | O | MATERIAL | TREATMENT | WEIGHT | HANDLE CODE | KIT CODE | |
|------|------|-------|------|---|-----------------|------------|--------|-------------|-----------|-----------|
| mm | 19 | 650 | 75 | - | CARBON STEEL | GALVANIZED | kg | 2,112 | C0012502Z | KOL00202Z |
| inch | 0,75 | 25,59 | 2,95 | - | | | lb | 4,66 | | |
| mm | 19 | 650 | 75 | - | STAINLESS STEEL | - | kg | 2,312 | C0012504H | KOL00206H |
| inch | 0,75 | 25,59 | 2,95 | - | | | lb | 5,10 | | |
| mm | 24 | 650 | 79 | - | CARBON STEEL | GALVANIZED | kg | 3,912 | C0012502Z | KOL00212Z |
| inch | 0,94 | 25,59 | 3,11 | - | | | lb | 8,62 | | |



SHORT HANDLES

| | SW | H | N | O | MATERIAL | TREATMENT | WEIGHT | HANDLE CODE | KIT CODE | |
|------|------|------|------|------|----------|-------------|--------|-------------|-----------|-----------|
| mm | 6 | 60 | 25,5 | 8,5 | ZAMAK | RED PAINTED | kg | 0,024 | C001490ZV | K1LT117ZV |
| inch | 0,24 | 2,36 | 1,00 | 0,33 | | | lb | 0,05 | | |
| mm | 9 | 60 | 25,5 | 8,5 | ZAMAK | GALVANIZED | kg | 0,022 | C009490ZC | KOL0014ZZ |
| inch | 0,35 | 2,36 | 1,00 | 0,33 | | | lb | 0,05 | | |



STRAIGHT HANDLES

| | SW | H | N | O | MATERIAL | TREATMENT | WEIGHT | HANDLE CODE | KIT CODE | |
|------|------|-------|---|------|-----------------|-------------|--------|-------------|-----------|-----------|
| mm | 14 | 200 | - | 14 | ALLUMINIUM | RED PAINTED | kg | 0,109 | C002950AV | KEL008HV |
| inch | 0,55 | 7,87 | - | 0,55 | | | lb | 0,24 | | |
| mm | 17 | 300 | - | 13 | CARBON STEEL | GALVANIZED | kg | 0,457 | C008130ZZ | KOL0012ZZ |
| inch | 0,67 | 11,81 | - | 0,51 | | | lb | 1,01 | | |
| mm | 17 | 300 | - | 13 | STAINLESS STEEL | - | kg | 0,467 | C0081306H | KOL00126H |
| inch | 0,67 | 11,81 | - | 0,51 | | | lb | 1,03 | | |